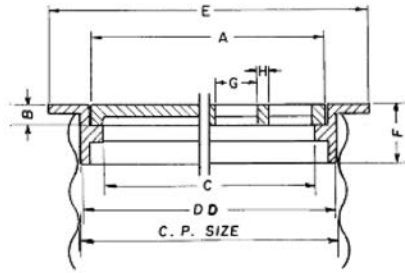


■ Note: When specifying/ordering grates, refer to "Choosing the Proper Inlet Grate" on pages 125-126.
 For a complete listing of FREE OPEN AREAS and WEIR PERIMETERS of all NEENAH grates, refer to pages 327-332.

R-5900 to R-5901 Series Slab Frame, Grate or Lid

Heavy Duty

CATALOG NUMBER	GRATE TYPE	SQ. FT. OPEN	WEIR PERIMETER LINEAL FEET
R-5901-A	G	0.2	2.7
R-5901-B	G	0.3	3.5
R-5901-C	G	0.5	4.3
R-5901-D	G	0.7	4.8
R-5901-E	G	1.1	5.8
R-5901-F	G	1.6	6.6
R-5901-G	G	2.0	7.4
R-5901-H	G	2.5	8.9
R-5901-J	G	3.7	10.5
R-5901-K	G	4.8	12.1



Sized to fit snugly into opening of corrugated pipe or similar piping.

Additional anchorage to metal pipe may be accomplished by drilling holes in the sleeve or barrel portion of the frame and bolting the frame in place. Frames can be furnished drilled for this purpose on special order.

For Bolted units, see **R-6461-2 Series**. For flange-down units, see **R-1792 Series**.

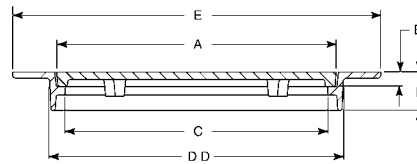
Dimensions in inches

Catalog No. Solid Lid	Catalog No. Open Grate	Pipe Size	A	B	C	DD	E	F	G	H
R-5900-A	R-5901-A	12	10 1/4	1 1/2	8 1/2	11 1/2	14 1/2	4	1	7/8
R-5900-B	R-5901-B	15	13 1/4	1 1/2	11 1/2	14 1/2	17 1/2	4	1	1
R-5900-C	R-5901-C	18	16 1/4	1 1/2	14 1/2	17 1/2	20 1/2	4	1	7/8
R-5900-D	R-5901-D	20	18 1/4	1 1/2	16 1/2	19 1/2	22 1/2	4	1 1/8	1
R-5900-E	R-5901-E	24	22 1/4	1 1/2	20 1/2	23 1/2	26 1/2	4	1 1/8	1
R-5900-F	R-5901-F	27	25 1/4	1 1/2	23 1/2	26 1/2	29 1/2	4	1 1/8	3/4
R-5900-G	R-5901-G	30	28 1/4	1 1/2	26 3/8	29 1/2	32 1/2	4	1	7/8
R-5900-H *	R-5901-H	36	34 1/4	1 1/2	32 1/2	35 1/2	38 1/2	4	1	1
R-5900-J	R-5901-J	42	40	1 1/2	38 1/2	41 1/2	44 1/2	4	1	1
R-5900-K	R-5901-K	48	46 1/8	1 1/2	44 1/2	47 1/2	50 1/2	4	1 1/16	1

* Available with removable center lid, see R-1586.

R-5915 Series Traffic PullBox Frame, Lid

Heavy Duty



Dimensions in inches

Catalog No.	A	B	C	DD	E	F
R-5915-B	13 1/4	1 1/2	11 1/2	14 1/2	20	4
R-5915-C	16	1 1/2	14 1/4	17 1/4	23	4
R-5915-E	22	1 1/2	20 1/2	23 3/8	30	4
R-5915-G	28 1/4	1 1/2	26 3/8	29 5/8	37	4

Supplied By:



www.trenchdrainsupply.com